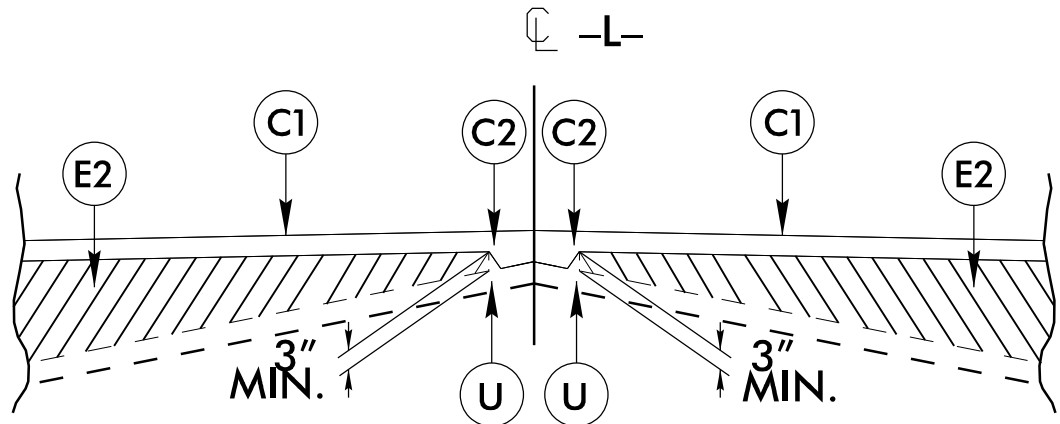


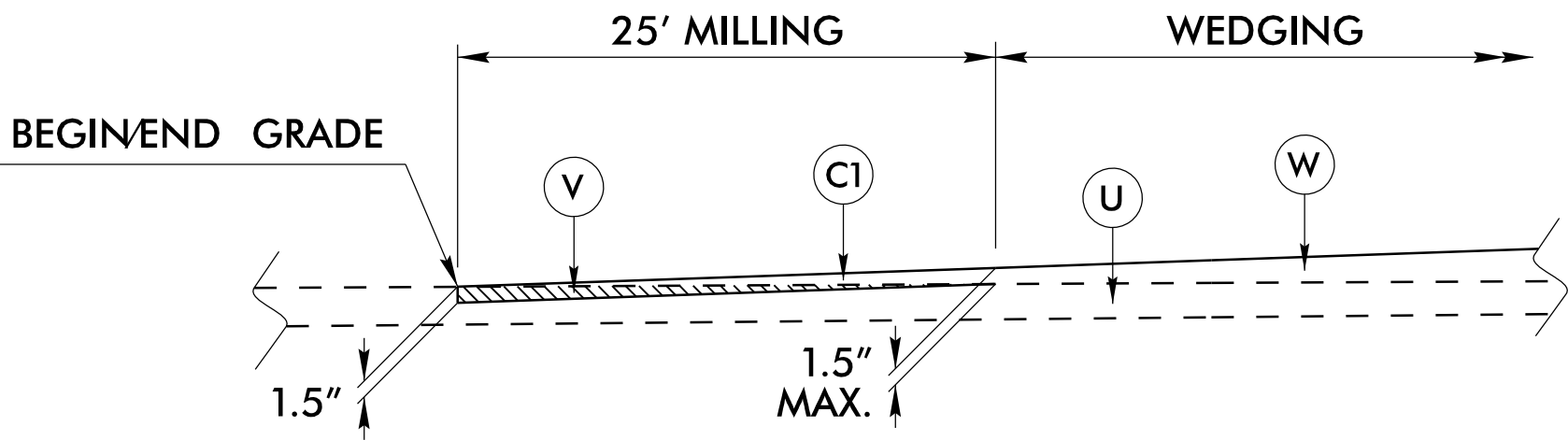
6/2/99  
07-OCT-2025 10:37  
Q:\cadd\com\11es\Projects\NCDOT\10034734006\_Polk\_112\03.00\_Project Execution\03.04\_Design\Roadway\Proj\740112.RDY\_TYP.dgn  
Davistm

PAVEMENT SCHEDULE	
C1	PROP. APPROX. 3" ASPHALT CONCRETE SURFACE COURSE, TYPE S9.5B, AT AN AVERAGE RATE OF 165 LBS. PER SQ. YD. IN EACH OF TWO LAYERS.
C2	PROP. VAR. DEPTH ASPHALT CONCRETE SURFACE COURSE, TYPE S9.5B, AT AN AVERAGE RATE OF 110 LBS. PER SQ. YD. PER 1" DEPTH. TO BE PLACED IN LAYERS NOT LESS THAN 1.0" IN DEPTH OR GREATER THAN 1.5" IN DEPTH.
E1	PROP. APPROX. 4" ASPHALT CONCRETE BASE COURSE, TYPE B25.0C, AT AN AVERAGE RATE OF 456 LBS. PER SQ. YD.
E2	PROP. VAR. DEPTH ASPHALT CONCRETE BASE COURSE, TYPE B25.0C, AT AN AVERAGE RATE OF 114 LBS. PER SQ. YD. PER 1" DEPTH TO BE PLACED IN LAYERS NOT LESS THAN 3" IN DEPTH OR GREATER THAT 5.5" IN DEPTH.
T	EARTH MATERIAL
U	EXISTING PAVEMENT
V	0"-1.5" MILLING
W	VARIABLE DEPTH ASPHALT PAVEMENT (SEE WEDGING DETAIL)

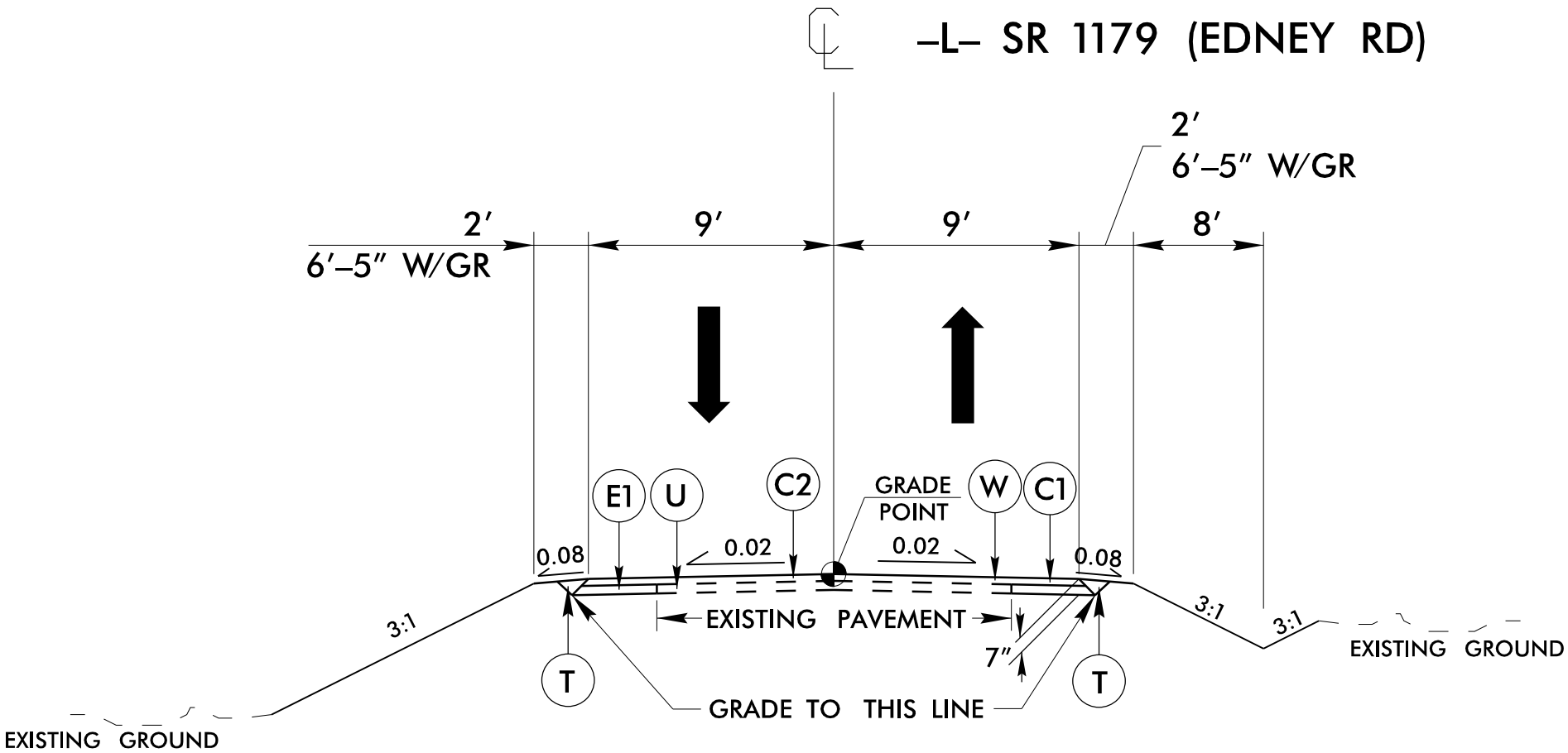
NOTE: ALL PAVEMENT SLOPES 1:1 UNLESS NOTED OTHERWISE



STANDARD WEDGING DETAIL

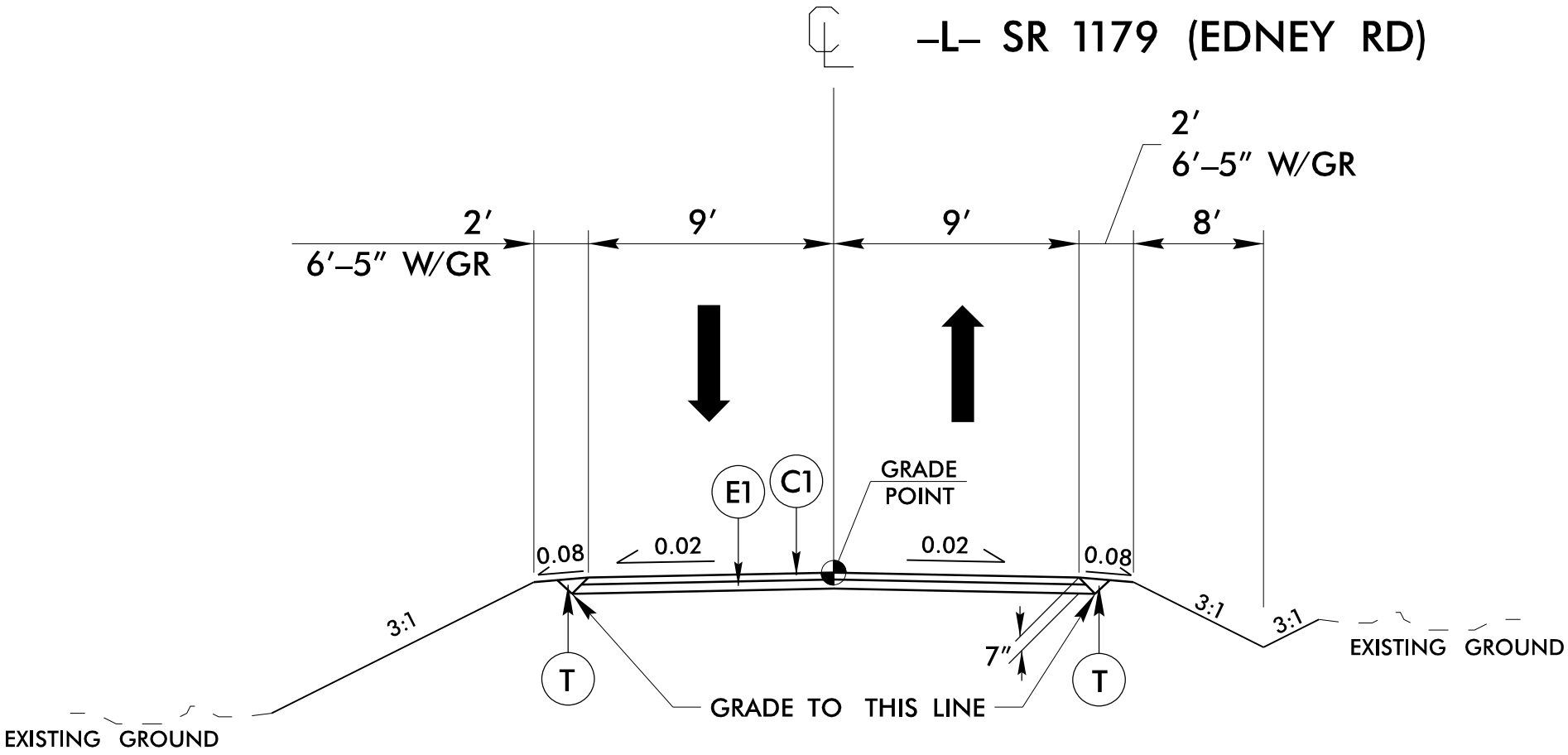


DETAIL OF 1.5" MILLING AT PAVEMENT TIE-INS



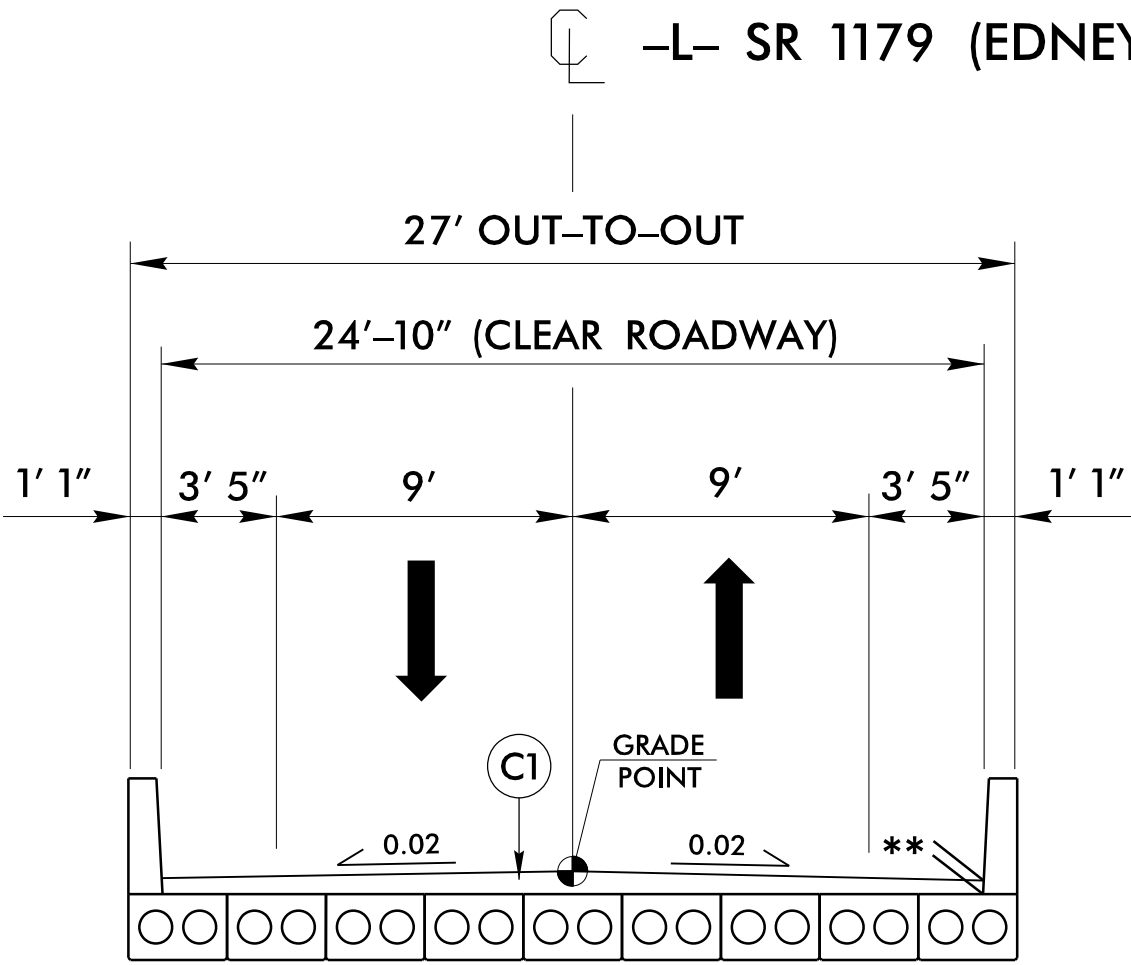
TYPICAL SECTION NO. 01

-L- STA. 10+50.00 TO -L- STA. 11+25.00



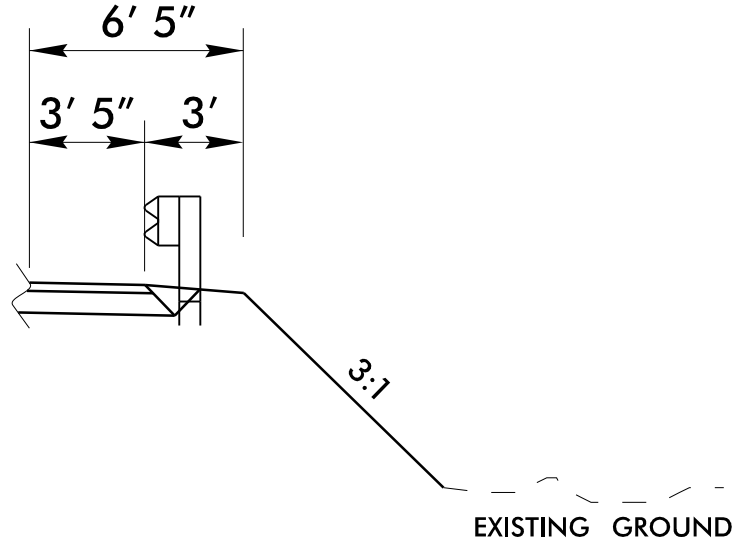
TYPICAL SECTION NO. 02

-L- STA. 11+25.00 TO -L- STA. 11+50 +/- (BEGIN BRIDGE)  
-L- STA. 12+80.00 +/- (END BRIDGE) TO -L- STA. 13+50.00



TYPICAL SECTION NO. 03


-L- STA. 11+50 +/- (BEGIN BRIDGE) TO -L- STA. 12+80 +/- (END BRIDGE)



\*SHOULDER DETAIL

USE IN CONJUNCTION WITH GUARDRAIL ON -L-  
SEE CROSS SECTIONS AND PLAN SHEET 04

\*\*SEE STRUCTURE PLANS FOR PAVEMENT THICKNESS

PROJECT REFERENCE NO.		SHEET NO.	
DF18314.2075090		2A-1	
ROADWAY DESIGN ENGINEER		PAVEMENT DESIGN ENGINEER	
		<b>DOCUMENT NOT CONSIDERED FINAL UNLESS ALL SIGNATURES COMPLETED</b>	